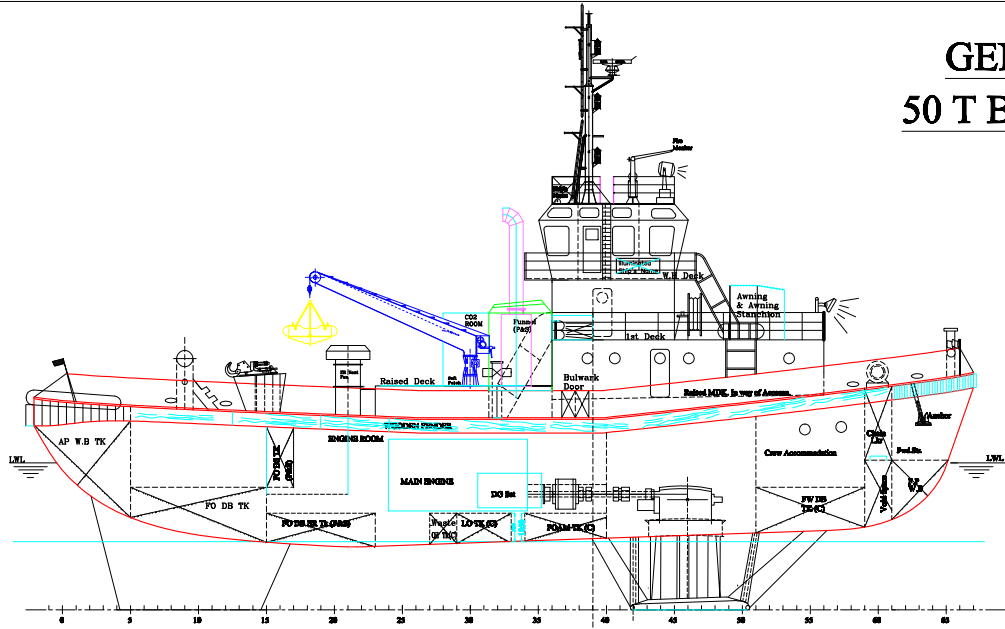
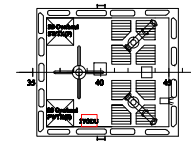


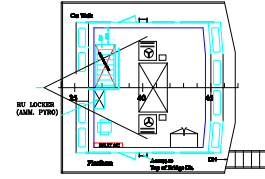
GENERAL ARRANGEMENT 50 T BOLLARD PULL VOITH TUG FOR INDIAN NAVY



PROFILE



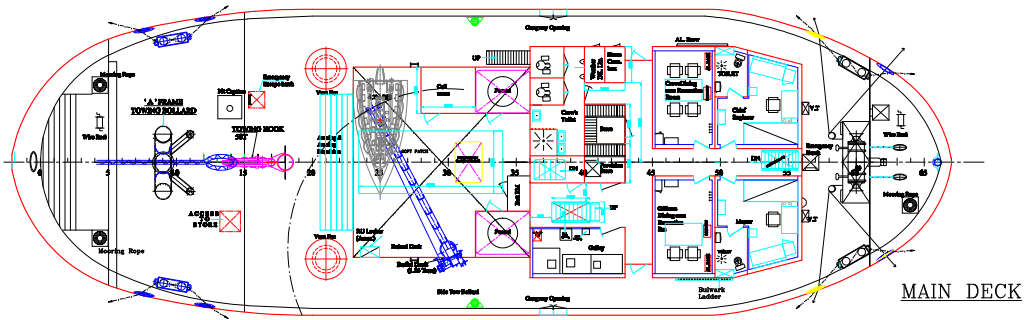
TOP OF BR.DK



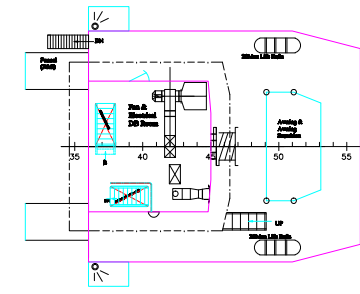
BRIDGE DECK

PRINCIPAL PARTICULARS

L.O.A	= 34.55 m
L.B.P	= 32.50 m
BREADTH MLD.	= 11.25 m
DEPTH MLD.	= 4.50 m
DRAUGHT HULL	= 2.90 m
DRAUGHT MAX.	= 5.40 m
BOLLARD PULL	= 50 t
COMPLEMENT	= 14
SPEED (MAX.)	= 12 Knots
POWER (MCR)	= 2 x 2460 KW
FRAME SPACING	= 500 mm

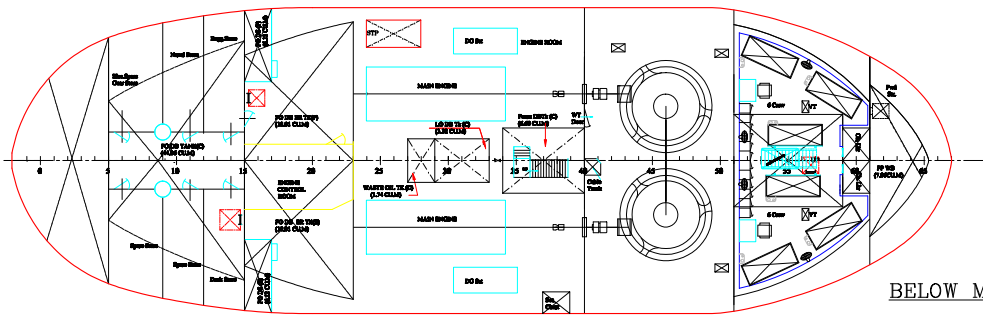


MAIN DECK



FIRST DECK

TANK CAPACITIES	
FRESH WATER	= 20.7 CUM
FUEL OIL	= 92.3 CUM
LUBS OIL	= 3.3 CUM
FOAM TANK	= 6.7 CUM



BELOW MAIN DECK

DRAWN	SHAHEN	BASED ON BDO NOTE DT. 23-05-2011, TELESCOPIC MAST DELISTED AND AS PER P.D.O NOTE DT. 04-05-11 LOCATION OF COX ROOM SHOWN.	B
CHECKED	M.S.N / S.V.R		
APPROVED	K.A.L	MODIFICATIONS	REWORKED, APRIL 2012
HINDUSTAN SHIPYARD LTD.		SCALE	SHIP No. 11162-64
VIKRAKAPATNAM, INDIA		1:800	
APPROVED:		DEPT. W.D.A	DRAWING No. 20001B
GENERAL ARRANGEMENT			SHEET No. 1 OF 1
11162-64 BDO DRG. NO. 50018 E			