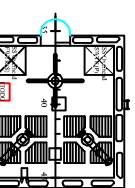
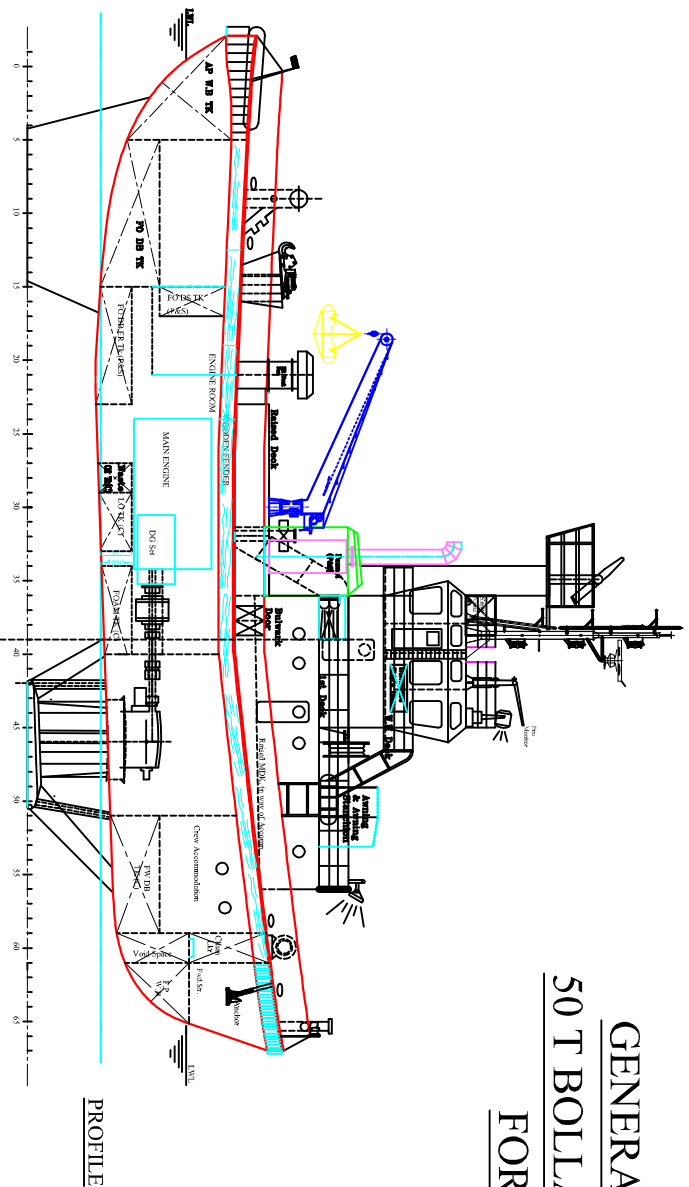
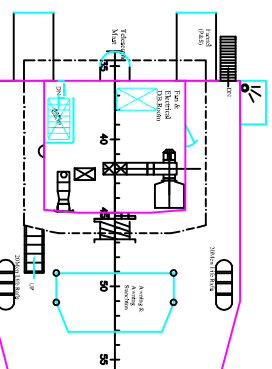
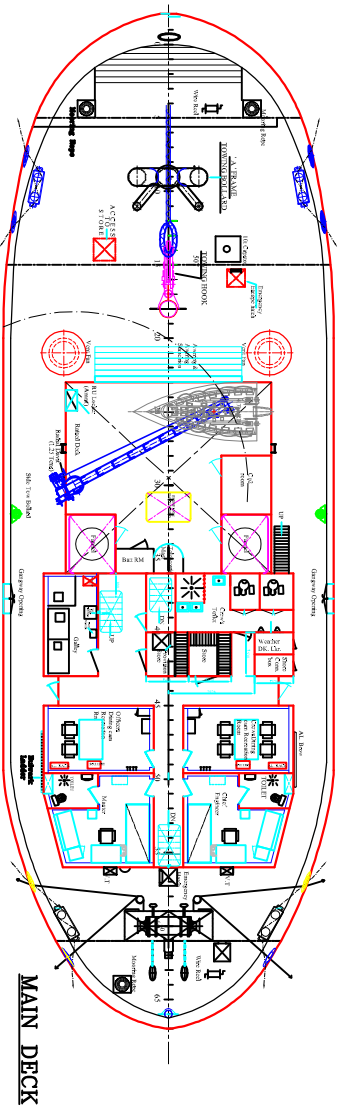
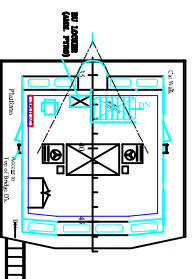


# GENERAL ARRANGEMENT 50 T BOLLARD PULL VOITH TUG FOR INDIAN NAVY

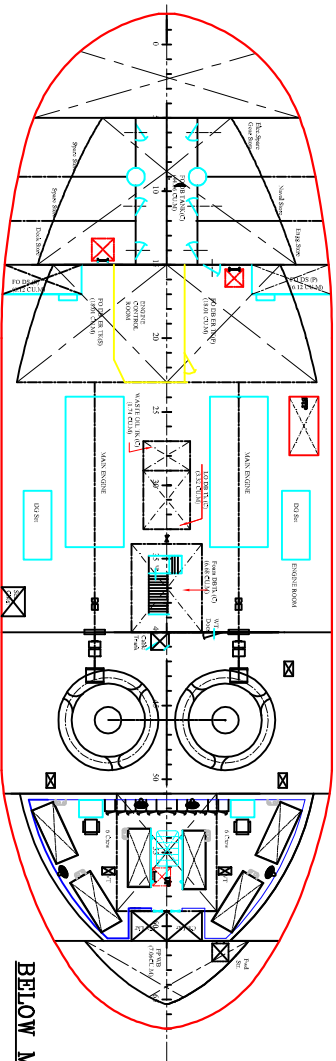


### PRINCIPAL PARTICULARS

L.O.A	= 34.55 m
L.B.P	= 32.50 m
BREADTH MLD.	= 11.25 m
DEPTH MLD.	= 4.50 m
DRAUGHT HULL	= 2.90 m
DRAUGHT MAX.	= 5.40 m
BOLLARD PULL	= 50 t
COMPLEMENT	= 14
SPEED (MAX.)	= 12 Knots
POWER (MCR)	= 2 x 2460 KW
FRAME SPACING	= 500 mm



TANK CAPACITIES	
FRESH WATER	= 20.7 CUM
FUEL OIL	= 92.3 CUM
LUBE OIL	= 3.3 CUM
FOAM TANK	= 6.7 CUM



DRAWN	SHIBHEN	APPROVED	
CHECKED	MASS SVR	APPROVED	
APPROVED	K.S.L	APPROVED	
HINDUSTAN SHIPYARD LTD.		SCALE	DRAWING APPR DATE
VISHAKHAPATNAM, INDIA		1:100	
APPROVED	DEPT WDA	SHEET NO.	11162-64
GENERAL ARRANGEMENT		DRAWING NO.	20001A
		SHEET NO. 1 OF 1	

11162-64 BDO DRG. NO. 50018 E